



ARDEN DIES
SOLID BOARD CUTTING DIES

welcome

PORTFOLIO 04

SOLID BOARD 06

CUTTING 10

STRIPPING 12

SCORING 14

CREASING 15

BLANKING 16

EMBOSSING 18

SPECIALITIES 20

ABOUT US 22

Die-making has seen rapid evolution within the print and packaging industry, progressing from the traditional hand cut formes to today's state-of-the-art laser technology delivering the highest specifications in both design and performance.

Arden Dies has been at the forefront of that evolution - continuing to invest in the technology that has driven the innovation that you see today in our products.

With decades of industry experience between them, here at Arden our highly-skilled team is our greatest asset. Our ability to innovate, create, problem solve and evolve is why we deliver to our customers the highest level of technical support, creative advice, and service that we do.

We have a dedicated team that services both the corrugated and carton board markets especially in the pharmaceutical, luxury packaging, cosmetic, cigarette, beverage, and food sectors.

Packaging design demands more than ever before from its supply chain to stand out in this challenging market where the consumer is king. Lead times are shorter, design is more

complex, digital technology is explored and boundaries are being pushed to strive for that iconic piece that catches everyone's attention. Carton design plays a key role in that process and we understand this. Each customer demands the best and we strive to deliver it.

We're also incredibly proud to be leading the way in the die-making sector with our eco-friendly operations and commitment to sustainability. Protecting the environment is everyone's responsibility and we're the first die-making company in the UK to achieve the ISO 14001 accreditation – internationally recognised for being an environmentally friendly company.

We don't use chemical processes in our production and the majority of the products we produce are between 80-100% recyclable. We're playing our part in the protection of our planet, and we continually review our product range to see where we can make alternative, more sustainable material choices.

Arden is the leading name in die-making and we're incredibly proud of the role we play within the growing industry that is packaging.

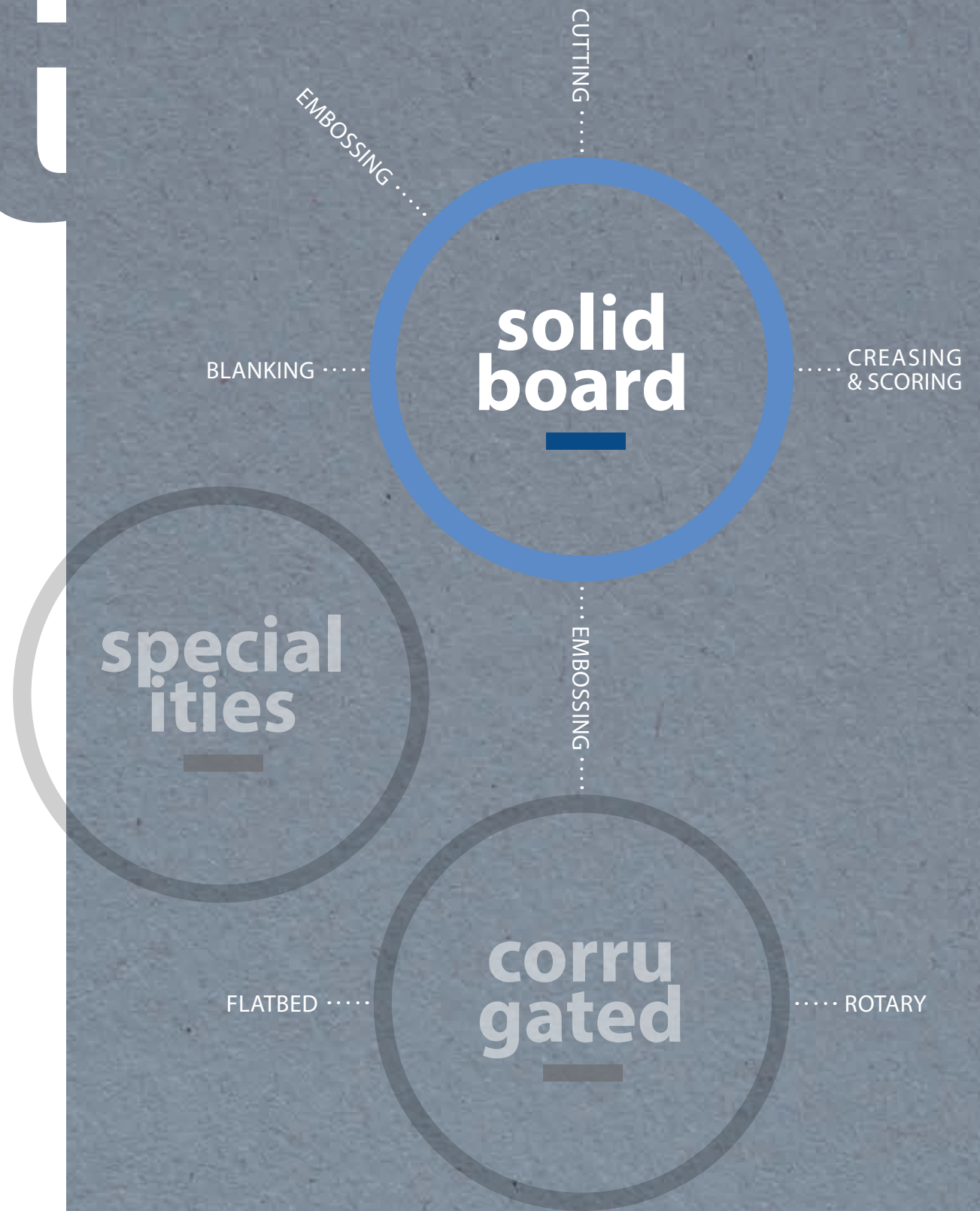
portfolio



Arden is the leading name in die-making. Founded in 1964, we're world-renowned in the packaging industry for our quality die-cutting and associated tooling solutions.

Working with some of the world's leading packaging converters for more than half a century, we're committed to continual investment in tooling technologies to deliver the highest quality, most innovative products, and to meet the ever-increasing demands of the carton and corrugated sectors.

You can rely on the expertise of our highly-skilled workforce to bring you the latest in high precision engineered tooling for all your die-cutting, stripping and blanking requirements. Our range of tooling solutions are driven by innovation and are at the cutting-edge of industry standards. We're one of the world's leading die-makers, with our headquarters in Greater Manchester, UK, and as part of a global packaging organisation, we're perfectly placed to deliver a first in-class service, ensuring optimal performance for all of your packaging needs.





solidboard

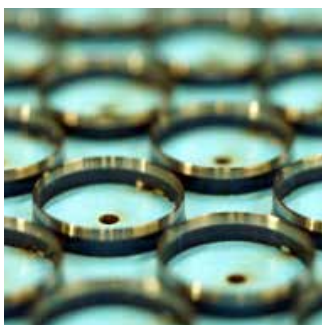
Whether you're converting high volume repeating layouts or low volume composite layouts, we'll have the cutting die, creasing, stripping and blanking solution to suit your specific requirements.

Looking to add luxury embellishment or Braille embossing to your packaging? We can help you add that finishing touch to all your packaging needs.

Arden Dies supplies and supports custom tooling requirements to some of the world's leading converters so you can rest assured you're in safe hands.

CUTTING

Arden Dies has a wealth of knowledge in the production of cutting dies. Utilising some of the most advanced CAD, laser, automation and engineering technologies, we can manufacture cutting forms to extremely high levels of precision to deliver the finest tooling in today's marketplace.



STRIPPING



Arden Dies is at the forefront of innovation. As part of our continual investment in the latest manufacturing technologies, automation is now a key focus across our product range and our stripping tool solutions are no exception. Combining innovative tooling strategies with high precision parts, alongside advanced automation, we can supply the industry's leading products for this most precise discipline within the carton converting operation.

solid board

BLANKING

Conventional engineering meets the very latest in automation technology, as we combine the highest quality materials to deliver the most durable and effective tooling solution within the blank separation operation, with various options designed to meet your specific layout requirements.

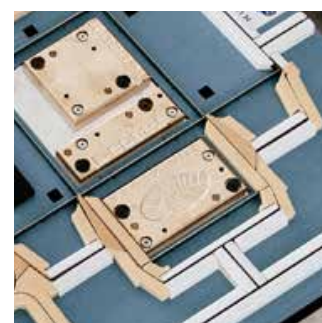


CREASING & SCORING



We've been producing creasing and scoring solutions to the carton and corrugated sectors for more than half a century. Drawing upon our vast experience and global alliances, we will deliver the right solution for you – from standard, everyday solutions to the most precise CNC-machined tooling sets.

EMBOSSING



With our in-house engraving division – Arden Engraving - located on-site, we're perfectly placed to complete your total tooling requirements. Whether it's the embellishment of luxury packaging or our Braille embossing solutions for the pharmaceutical sector, we can help you add the finishing touch to all your packaging needs.

CUTTING

Standard Cutting Die

All Arden's standard cutting formes are produced from the highest-grade Finnish birch wood, providing excellent stability and accuracy. Thanks to the very latest laser technologies and automated rule processing machinery, we can produce tooling to the highest degrees of accuracy, reducing your make-ready times – saving you money and resources. We can supply specific rule types, tailored to the board you're converting; add conventional and Braille embossing and ensure your tooling is supported by the precise rubbering specifications for optimal tooling performance.



- CUSTOMER BENEFITS**
- High quality materials
 - Precision ruling
 - Dimensionally accurate

Solidplate

Known as 'The Accurate One'. If your layout is complex, with high meterage, and you need accuracy for long running repeat work, then the Solidplate dieboard is the economical, entry level tooling for you. Its dimensional stability is ideally suited to work alongside our steel engraved plate creasing tools and you'll be able to rerule the Solidplate up to three times. Sandwiched between two steel plates, this allows for fast and easy rubber exchange with no damage to the surface substrate.



- CUSTOMER BENEFITS**
- Dimensionally stable
 - Durable
 - Multiple re-rules
 - Economical

Duramar

Known as 'The Durable One' - the Duramar is our premium cutting tool solution. Made from a combination of fibre-reinforced plastics and steel sheets, this dieboard has exceptional dimensional stability and an extremely long lifespan. It is not susceptible to moisture within the environment and therefore its core stability is not compromised and is permanently maintained. If you're looking for absolute precision on large format machines, then working in conjunction with our steel engraved plates, the Duramar dieboard is for you. It delivers the highest creasing quality and can be re-ruled up to five times.



- CUSTOMER BENEFITS**
- Extremely precise
 - Resistant to environmental conditions
 - Large format compatible
 - Exceptionally long lifespan

Rayform

Ideal for dimensional stability, this tooling is an economical solution that's compatible to use with steel engraved creasing plates and offers additional accuracy on both regular and larger format layouts.



- CUSTOMER BENEFITS**
- Dimensionally stable
 - 3B and Size 6 formats
 - Compatible with engraved steel creasing plates

STRIPPING

Arden Cluster Pins

The pins are set on a platform, which are fixed to your existing telescopic bottom pins. Used when the areas of waste to be stripped are too close together to allow the fitting of conventional bottom pins on the lower frame unit.



CUSTOMER BENEFITS

- Simple to fit
- Strips waste when telescopic pins are restricted

Speed Pin

A patented consumable product that is incorporated within the Arden Strip system. Arden Dies were actively involved with the initial testing of this product and have a wealth of understanding in its use. The lower stripping board is lasered with slots into which each pin is clicked into place, reducing the need to bottom pin complex layouts.



CUSTOMER BENEFITS

- Assists stripping of narrow slots
- Reduces the number of bottom pins
- Spare pins easy to replace

Craft-Strip

A robust and durable component which is incorporated within the Arden Strip system, working as an alternative restriction when converting tough Craft based and corrugated boards and optimising the dynamic stripping performance.



CUSTOMER BENEFITS

- Strips difficult shapes
- Suitable for heavy carrier boards and E-Flute corrugated board
- Improves stripping of side and back waste
- Available in two sizes

Arden TPS (Top Plate Solution)

This product has a wooden plate which fixes the sheet to the female unit prior to the action of the stripping process. Utilising an advanced clamping system, the sheet is held completely flat, which reduces trauma and delivers a more consistent stripping, with the upper clamp replacing the application of the foam pads. Combined with Arden lifters on the female board this further enhances the stripping performance when the sheet's stability is compromised by excessive areas of waste, warped sheets or poor-quality board.



CUSTOMER BENEFITS

- Faster machine speed
- Stable sheet
- Improves warped sheets and poor-quality board
- Improved waste removal

Arden Strip

This product merges both the revolutionary Speedstrip claws and the innovative Boxplan pins, to produce a hybrid stripping solution to optimise your waste stripping process. Our upper and lower stripping units are lasered to the highest accuracy to ensure that there is perfect alignment between the two parts, which is critical to achieve perfect stripping results.

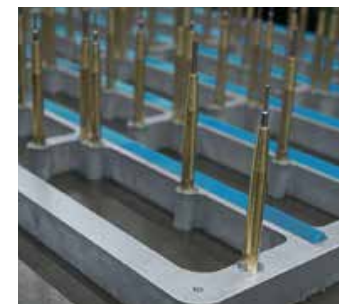


CUSTOMER BENEFITS

- Quick set-up
- Dynamic stripping
- Accurate and stable

Arden UFS (Under Action Frame System)

The system is a dedicated bottom stripping unit, using conventional telescopic pins fixed to a bespoke machined frame, which is fixed to the under-action pin frame of your machine. The tooling is effective, where waste areas are very close together and the space required to set conventional bottom pins is restricted. Designed as a pre-set bottom pin unit for complex layouts to save time in your PMR department, freeing up existing pin equipment making it ideal for dedicated use on repeat work.



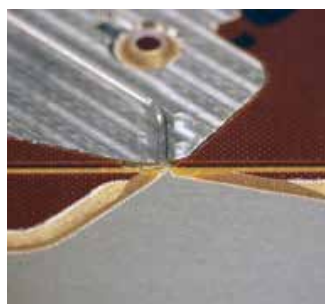
CUSTOMER BENEFITS

- Significantly reduces your PMR time
- Ensures 100% removal of small waste areas
- Reduces number of stock parts carried in PMR

SCORING

Reverse Scoring

Our spring steel reverse score plates are expertly machined to exacting tolerances, meaning both the face and reverse scores are precisely executed to deliver a clean and effective opening feature. Our plates are produced on our state-of-the-art milling machines, working in conjunction with our ground anvils to deliver consistent precision. We offer various rubber and lifter options to assist with the release of the sheet from the cutting plate and avoiding any potential sheet break-up during the process. We also pay special attention to the profiling of each unit to ensure a quick and effective make-ready.



CUSTOMER BENEFITS

- High tolerance tooling
- Optimal opening mechanism
- Dust proof packaging

Adjustable Height Anvil

Ensuring the correct balance between the face and reverse score is critical in achieving the optimal opening feature. Being able to adjust the height of the anvil with the use of shims, allows the operator to fine-tune the process in addition to the conventional tape method on the patch sheet.



CUSTOMER BENEFITS

- Simplifies set-up
- Time-saving
- Complementary make-ready technique

Rillma

The original pre-set creasing solution. Economical, accurate, durable and suitable for short to medium run lengths with a quick production turnaround.



CUSTOMER BENEFITS

- Very economical
- Simple to use
- Excellent creasing quality

Steel Counter Plates

The premium creasing product and essential for long run lengths and repeat orders. Arden Dies has invested in state-of-the-art CNC milling technology, enabling us to bring this product to our customers within a price range to be considered for a wide range of packaging projects. Available in varying hardness grades to suit your run lengths and board types for the ultimate crease.



CUSTOMER BENEFITS

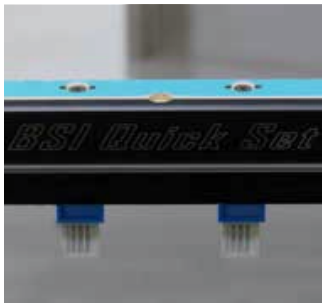
- Perfect creases
- Minimal set-up times
- No bruising of cartons
- Quicker machine running times

CREASING

BLANKING

BSI

If your machine is equipped with the BSI frame, then we can produce the top blanker and lower grid. Simply fit the lower grid into your BSI frame, engage the back bar and lock-up. The system also benefits from the Arden recyclable joggers or the BSI steel options.

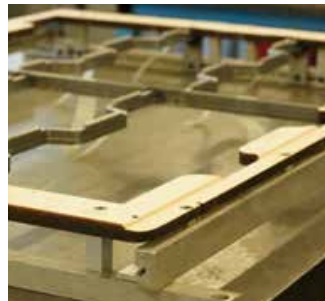


CUSTOMER BENEFITS

- Cost effective
- Recyclable parts
- Simple to fit
- Smaller storage footprint

ECO

With the bottom grid mounted to an aluminium frame, this dedicated format is a lightweight and durable blanking solution, suitable for all machine formats. Arden's Eco Blanker is very simple to set up, and, if your layout becomes obsolete, then component parts such as the aluminium frame and joggers are recyclable, saving you money and reducing waste.



CUSTOMER BENEFITS

- Lightweight aluminium construction
- Recyclable parts
- ER and CER machine compatible
- Accurate and durable

Light

Our 'in-house' lightweight alternative to the BSI system. It's based on a modular frame with an easy moving adjustable back bar to fix to the lower grid. The Light Blanker from Arden Dies is very simple to use and compatible with the BSI system as well as a stand-alone product.



CUSTOMER BENEFITS

- Cost effective
- Recyclable parts
- Lightweight and stable
- Simple to fit
- Smaller storage footprint

Dedicated Blanker

The original blank tooling solution. Entirely manufactured in steel, this is an incredibly strong and durable product, ideally suited where stability, repeat work and a long lifespan are essential.



CUSTOMER BENEFITS

- Solid and precise construction
- Adjustable strips for side waste flexibility
- Ideal to support guttered waste

Universal Sheet Blanker

The sheeting system has a unique adjustable male top blanker, with moveable blocks which can be placed to accommodate multiple sheet blanker layouts. In any circumstances, movement can be achieved without removing the upper board from the machine, further reducing set-up times. The Universal Sheet Blanker is ideal if you're not fully blanking your sheets and a front edge guillotine can also be fitted to profile the front edge.



CUSTOMER BENEFITS

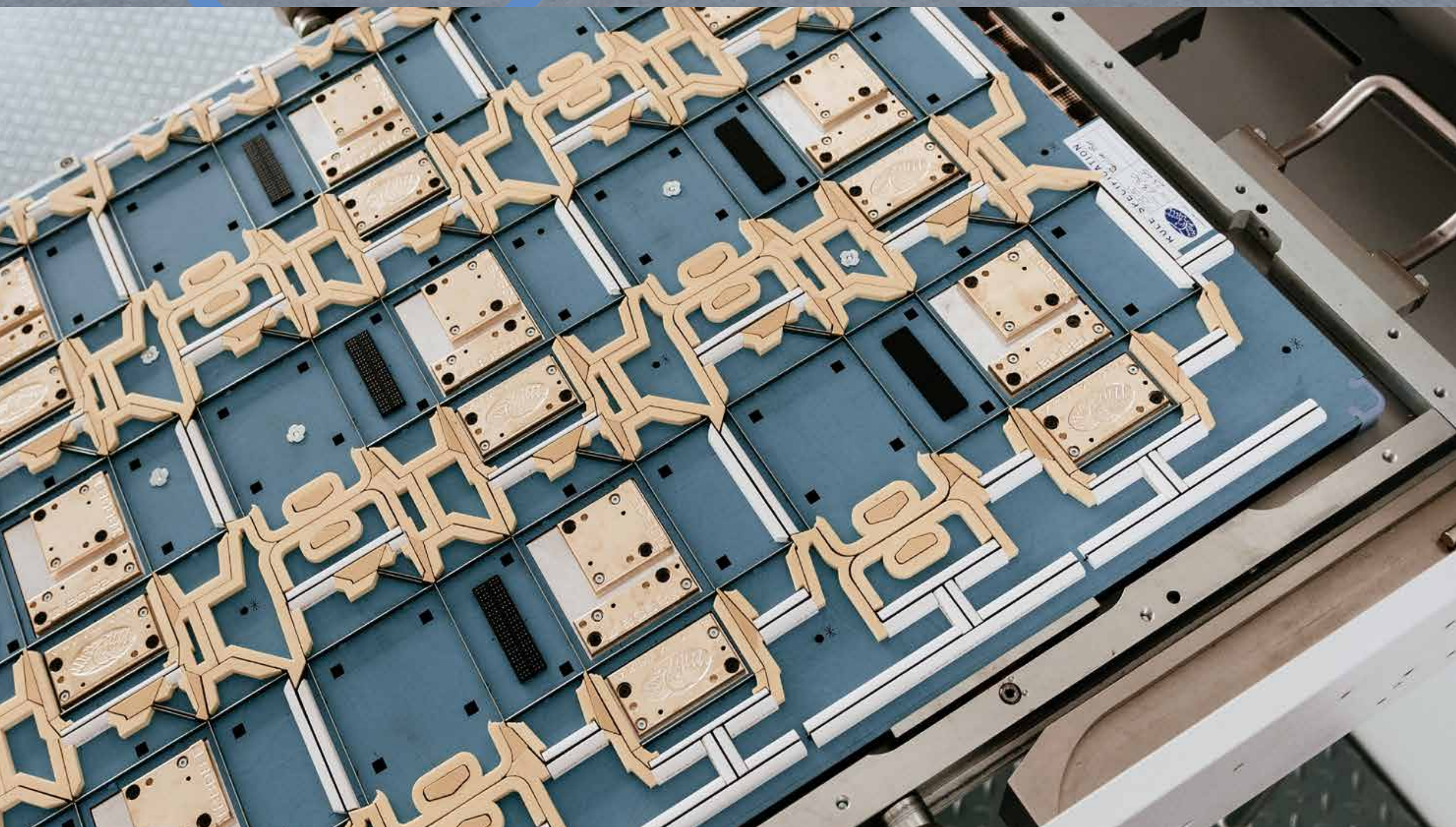
- Saves manual stripping
- Adjustable to suit multiple layout formation
- Simple and quick to use
- Compatible with the Light Blanker and BSI frames

EMBOSSING

Arden Dies can supply all of your embossing requirements; from Braille for the pharmaceutical industry to the most complex multi-level embossing for the luxury sector. All tooling is manufactured in our on-site engraving division – Arden Engraving. Founded in 1999, you can be confident in the experience, skill and expertise of our engraving department, which has been using the most advanced CNC machinery to

produce embossing and hot foil stamping tools for more than two decades. This level of connectivity and flexibility with our in-house engraving division, ensures we can deliver your exact requirements, without the need to involve third party suppliers. We can provide our customers with a quick and simple solution, no matter how complex the project.

www.ardenengraving.com

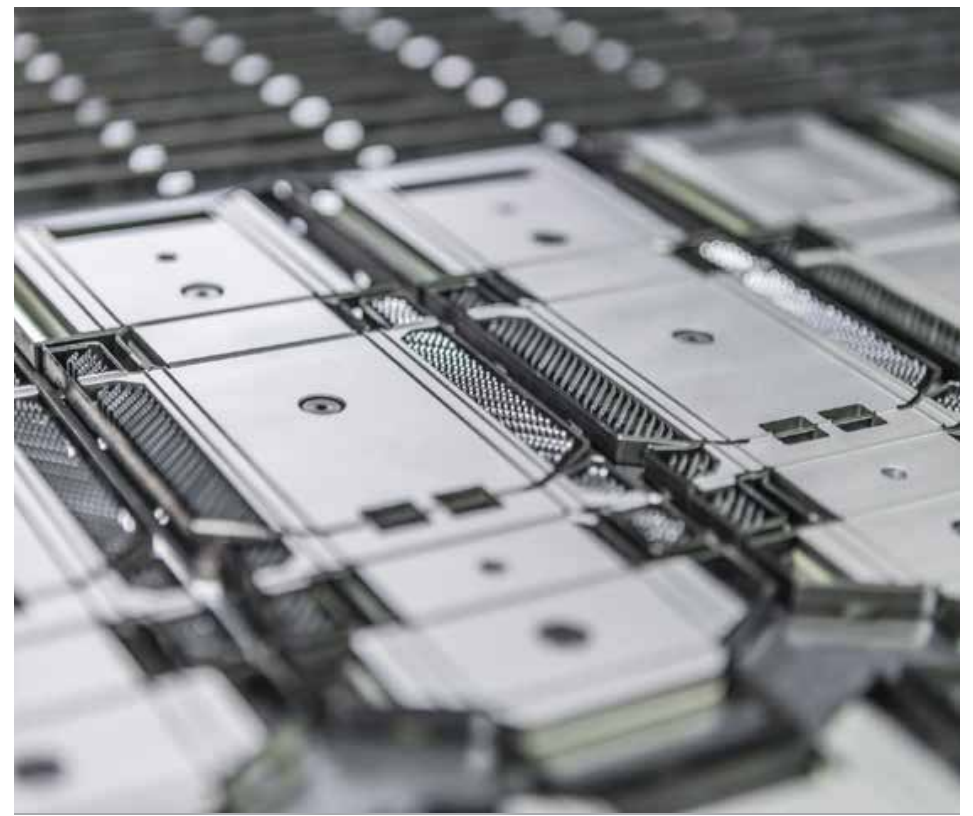


Specialities



- NICK BREAKING BLANKER ● We work in partnership with global packaging
- MDSS STORAGE ● company Marbach to provide a wide range
- MPOWER+ ● of technical solutions designed to improve
- CREASE PLATE DIE ● machine set-up times, increase machine
- PURE EDGE ● throughput and improve the quality of your
- MARBANICK ● finished product.

For more information visit www.marbach.com



ABOUT US

Here at Arden Dies, we're proud of our history – it makes us who we are today.

The Arden journey began in 1964 in the cellar of a semi-detached house in Stockport, when brothers Frank and Philip Poynter set up a die-making operation from their family home. Fast forward more than half a century since the Poynter brothers first set to work in their 10ft underground workspace, and Arden is the leading name in the die-making and packaging sectors.

The Arden group of companies employs 165 people around the world and has an annual turnover of £11 million, through our Dies, Engraving and Software divisions. With a global workforce of highly skilled and talented people, and operations around the world including Germany and the USA; we are proud to work with some of the largest producers in the packaging sector, who know they're in safe hands with Arden Dies.

Visit www.ardendies.com to read the full Arden Story.



Arden Dies

SERVICE

We understand that the measure of any company is in both its products and its services and Arden Dies is no exception. Whether it is working with your design team to offer solutions, or advising on capabilities, we can support your needs.

Our sales team are here to support your ongoing projects and technical queries in both the design stage and on-press assistance when needed, to enable you to deliver the highest level of service for your own customers.





Arden Dies

Arden House | Shepley Lane | Marple | Stockport | SK6 7JW | United Kingdom

Phone +44 (0) 161 449 6200 | info@ardendies.com

www.ardendies.com